

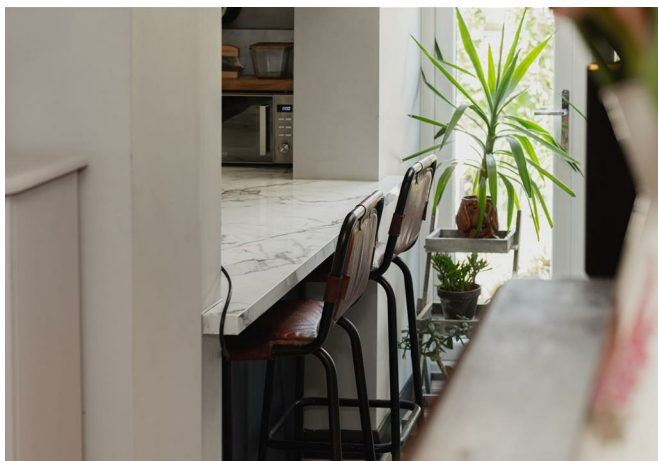


# Priors Road, Reigate

Guide Price £375,000







“

Located just South of the town centre, within a few minutes walk of Priory Park, this gorgeous period conversion ticks all the boxes. With a high standard of finish and spacious rooms throughout, as well as a private, decked garden, it is an ideal first purchase.

”





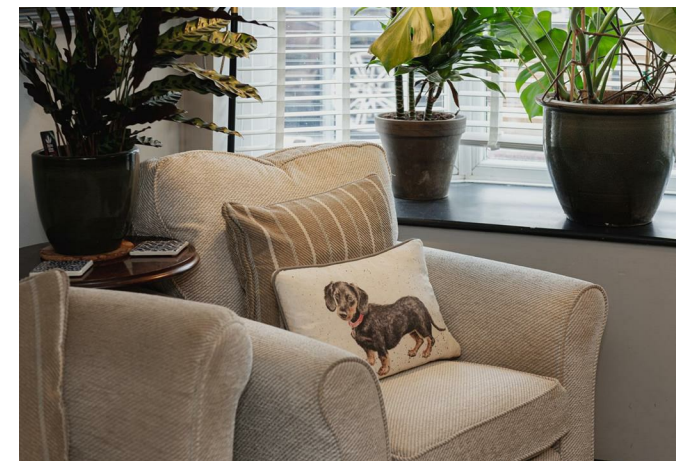
Guide Price - £375,000

This elegantly renovated 1860's two-bedroom, converted maisonette has been beautifully finished with the perfect combination of old and new. Exposed brick fireplaces, a bespoke fitted kitchen, luxurious bathroom and warm inviting décor – this apartment is ideal for first time buyers looking to get onto the property ladder, busy working professionals or investors.

Built in 1861, the property is full of original features. There is parking on the drive and a private front door takes you into the maisonette. The double living space has defined areas for seating and dining, with room for a large table and chairs, great for having friends or family over. The exposed brick fireplaces create a striking focal point in the rooms.

The kitchen has been thoughtfully designed with a striking contrast between the white, marble style worktops and navy units. There is plenty of space at the breakfast bar, where you can sit by the French doors which lead to the private garden. The bathroom has a freestanding bath as well as a separate shower and there is access from here into the useful basement storage area.

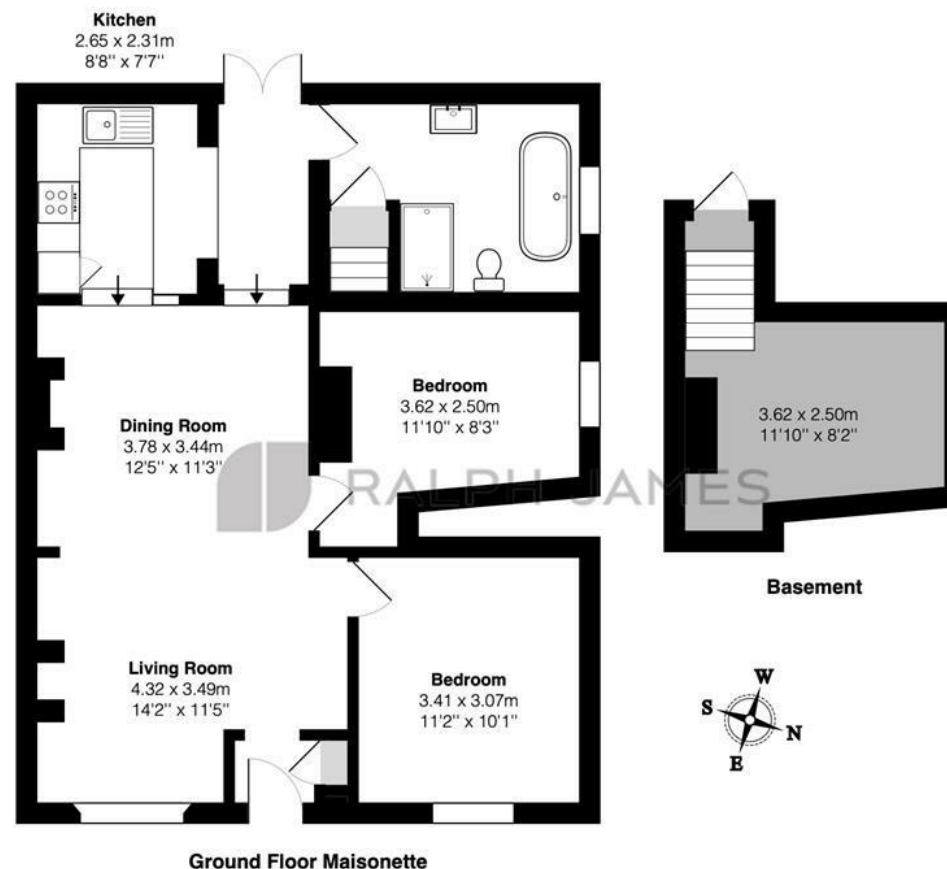
Outside, is a private decked garden space. It's a lovely, sunny, secluded area, perfect to enjoy the sunshine and bbq!





## Need to know

- Ground floor maisonette with private entrance
- Two good size double bedrooms
- Large, double reception room with ample room for a table and chairs as well as the sofas
- Kitchen area with breakfast bar seating
- Luxurious bathroom with stand alone bath and separate shower
- Access to basement storage area
- Off road parking to the front of the property
- Character features throughout
- Private, West facing decked garden, perfect for a bbq
- Share of Freehold



Priory Road, Reigate

Total Area: 81.5 m<sup>2</sup> ... 878 ft<sup>2</sup>

FOR ILLUSTRATIVE PURPOSES ONLY.

Whilst every attempt has been made to ensure the accuracy of the floor plan shown, all measurements, positioning, fixtures, features, fittings and any other data shown are an approximate interpretation for illustrative purposes only and are not to scale.

No responsibility is taken for any error, omission, miss-statement or use of data shown.

The above statement applies to both 'Still Moving London LTD' and the Company or individual displaying this floor plan.

Unauthorised reproduction prohibited.

© Still Moving London LTD (www.stillmoving.london)



## Interested?

reigate@ralphjames.co.uk  
01737 333677

ralphjames.co.uk